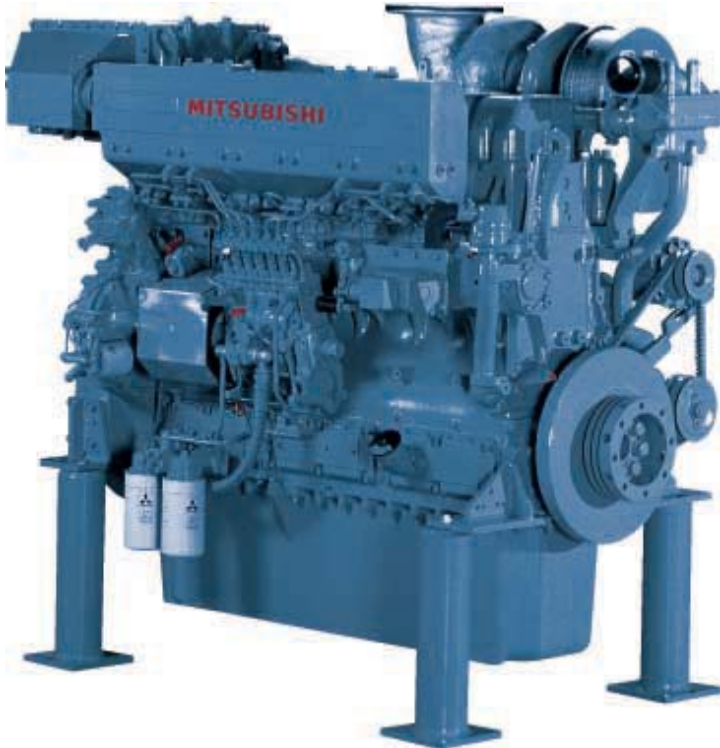


# S6A3-Y3MPTK

Reliable, Mechanical and Tier 3 Compliant



The S6A3-Y3MPTK engine is designed and built in Japan.

Mitsubishi has put together the ideal features for its new engine. Its reliable, Fully mechanical and Tier 3 compliant.

We didn't need to use complex electronics. We just used smart engineering to build a simple, powerful and easy-to-maintain engine.

This is the perfect engine for your Tugboat, Offshore and Cargo Vessel.

***What else could you want for the long haul?***

*Information is subject to change without notice*

Mitsubishi Engine North America, Inc.

1250 Greenbriar Drive, Suite E, Addison, IL 60101

Telephone: +1 (630) 268-0750 Fax: +1 (630) 268-9293

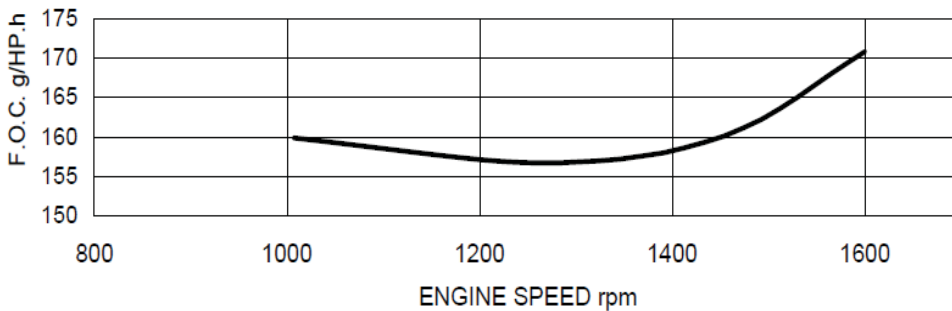
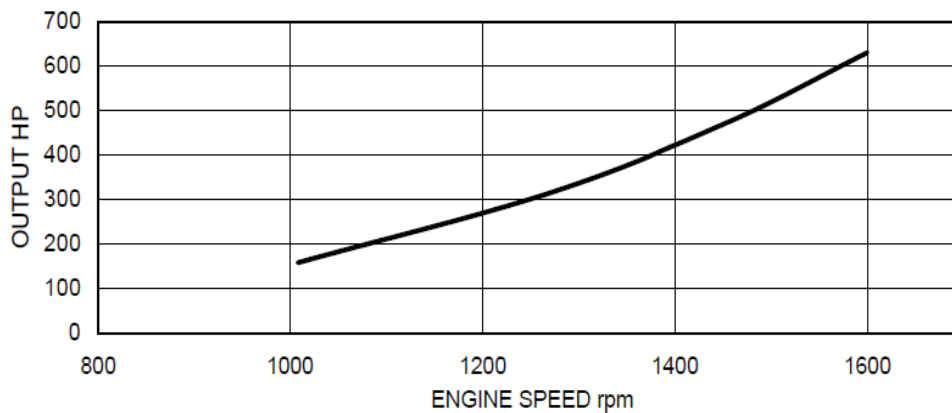
# S6A3-Y3MPTK

Brake Horsepower: 543hp@1840rpm

Bore x Stroke: 150mm x 175mm (5.91in x 6.89in)

Displacement: 18.56L (1133 cu. in.)

## Horsepower Rating



The F.O.C. data is test bench data and not a guaranteed performance.  
Data is subject to change without notice.

## Product Dimensions & Dry Weight

Length		Width		Height		Weight (Dry)	
mm	in	mm	in	mm	in	lb	kg
1,636	64	1,035	41	1,421	60	1,900	4,100

Information is subject to change without notice.  
Dimensions and Weight may vary based on selected engine configuration.

Mitsubishi Engine North America, Inc.

1250 Greenbriar Drive, Suite E, Addison, IL 60101

Telephone: +1 (630) 268-0750 Fax: +1 (630) 268-9293