

## **S12A2-Y2MPTK-3**

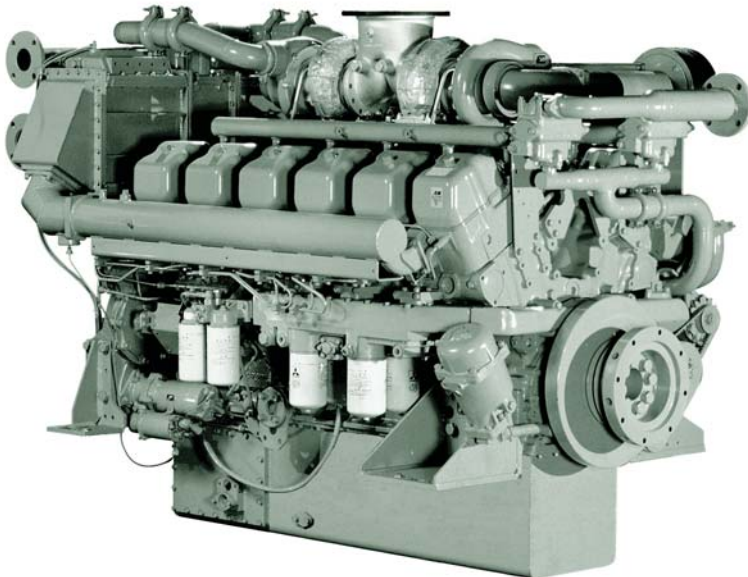
### **Marine Application**

Mitsubishi's EPA compliant mechanical marine engine design allows for easy maintenance, that's why its the most reliable in the market. In an effort to stand behind our engineering success, we would like to introduce our newest parts kits developed to support these engines because with Mitsubishi, its just that simple.

## **Major Overhaul Kit**

**(up to 16,000 hours of operation)**

- 100% Genuine Mitsubishi parts
- Includes all liners, pistons, bearings, gaskets and seals needed\*



**Part #: K03-A2-001**

**Net Price: \$49,109.04\*\***

*Price varies, dependent on distributor participation for special pricing*

**Questions?**

**Contact your local distributor or  
call us at (630) 268-0750**

\*Parts included in this kit are for standard engine only. Engine options or add-ons not included.  
Part numbers subject to change.

\*\*Pricing offer valid until February 28th, 2015